

Lincoln Center

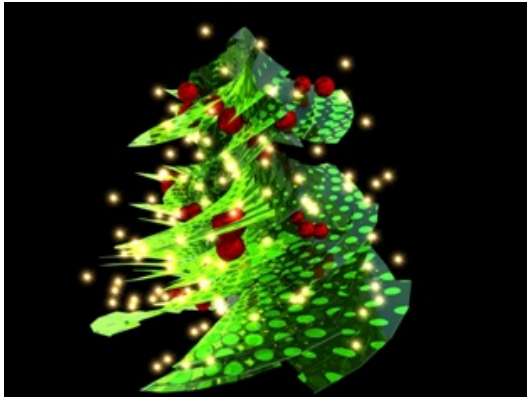
August 21, 2008
Contact: Kate Merlino
(212) 875-5101 / kmerlino@lincolncenter.org

LINCOLN CENTER TO PRESENT A VIRTUAL TREE LIGHTING IN DECEMBER
130-foot wide Video Projection of Festive Images will Herald the Holiday Season

Plus:

Dancers from The New York City Ballet in an excerpt from *George Balanchine's The Nutcracker™*;
Musicians from The New York Philharmonic performing Holiday Music;
Cast members from Tony Award-winning "South Pacific" doing a number;
and more!

MONDAY, DECEMBER 1, 2008
All presented free of charge



On Monday, December 1, 2008, Lincoln Center for the Performing Arts will present its 19th Annual Holiday Tree Lighting celebration from 5:30 to 6:00 p.m. Following performances by several of Lincoln Center's constituent organizations, a dazzling video artwork will be projected onto the east facade of the New York State Theater (facing Columbus Avenue). The artwork, which is 130-feet in diameter, will project dozens of images all associated with the holiday season. According to Lincoln

Center's Nigel Redden, "It will be a constantly evolving piece, with 2 to 3 minute vignettes morphing into the next, with possible interactive parts, all vividly evoking a festive holiday spirit."

The video will be on a two-hour loop which will run continuously every night, from 5:00pm until 12 midnight, through the holiday season to January 2, 2009. It is the work of Gilles Papain, who has created video art for Ballets de Monte Carlo, Opera de Marseille, the Spoleto Festival and Disneyland. At 5:57pm on December 1st, Lincoln Center's holiday season will be officially launched when Mickey and Minnie Mouse join with neighborhood children to light the "virtual" Lincoln Center holiday tree. (The video artwork was created because the construction on Lincoln Center's Josie Robertson Plaza does not allow for a traditional cut evergreen as in years past.) The lighting follows performances on the New York State Theater upper portico by New York City Ballet of *George Balanchine's The Nutcracker™*, an ensemble from the New York Philharmonic performing a medley of holiday music, and members of the cast from the Tony Award-winning "South Pacific" doing a number from the show. Columbus Avenue will be closed from 62nd to 65th Streets so that the audience has a good vantage point to view the spectacle.

This exciting celebration of music and dance is one of New York City's favorite holiday traditions, celebrating the rich diversity found at America's premier performing arts center. The event will be broadcast on WABC-TV, Channel 7, throughout the evening's newscasts. *Good Morning America's* Sam Champion and WABC-TV's Sade Baderinwa will be the evening's co-hosts.

Sponsored by Disney

THIS EVENT IS FREE AND OPEN TO THE PUBLIC. For more information, call the Lincoln Center Information Hotline, (212) 875-5456, or visit our website at LincolnCenter.org.

Immediately following Lincoln Center's Holiday Tree Lighting,
The Lincoln Square Business Improvement District will present
The 9th Annual "Winter's Eve at Lincoln Square,"
an exciting neighborhood celebration featuring free entertainment, family fun, kids' activities,
food tastings, shopping and in-store activities throughout the vibrant, historic Upper West Side.
This year's Winter's Eve celebration will extend from Columbus Circle,
with activities at Time Warner Center, all the way up to West 68th Street –
all adding up to a magical evening that launches the holiday season.

For more information on Winter's Eve please call (212) 581-7762 or visit www.winterseve.org.

Operation of Lincoln Center's public plazas is supported in part with public funds provided by the City of New York.

Movado is an Official Sponsor of Lincoln Center, Inc.

Continental Airlines is the Official Airline of Lincoln Center, Inc.

Nokia is the Official Mobile Equipment Provider of Lincoln Center, Inc.

MetLife is the National Sponsor of Lincoln Center, Inc.

Lincoln Center's Tree Lighting is a presentation of Lincoln Center, which is responsible for over 400 performances produced and presented annually. Lincoln Center for the Performing Arts (LCPA) serves three primary roles: presenter of superb artistic programming, national leader in arts and education and community relations, and manager of the Lincoln Center campus. LCPA's programs include *American Songbook*, *Great Performers*, *Lincoln Center Festival*, *Lincoln Center Out of Doors*, *Midsummer Night Swing*, the *Mostly Mozart Festival*, and *Live From Lincoln Center*

Lincoln Center is committed to providing and improving accessibility for people with disabilities. For information, call the Department of Programs and Services for People with Disabilities at 212-875-5375.

Photos: Color and black and white images are available to the media on Lincoln Center's website at:
http://www.lincolncenter.org/aboutlc/media_home.asp

###